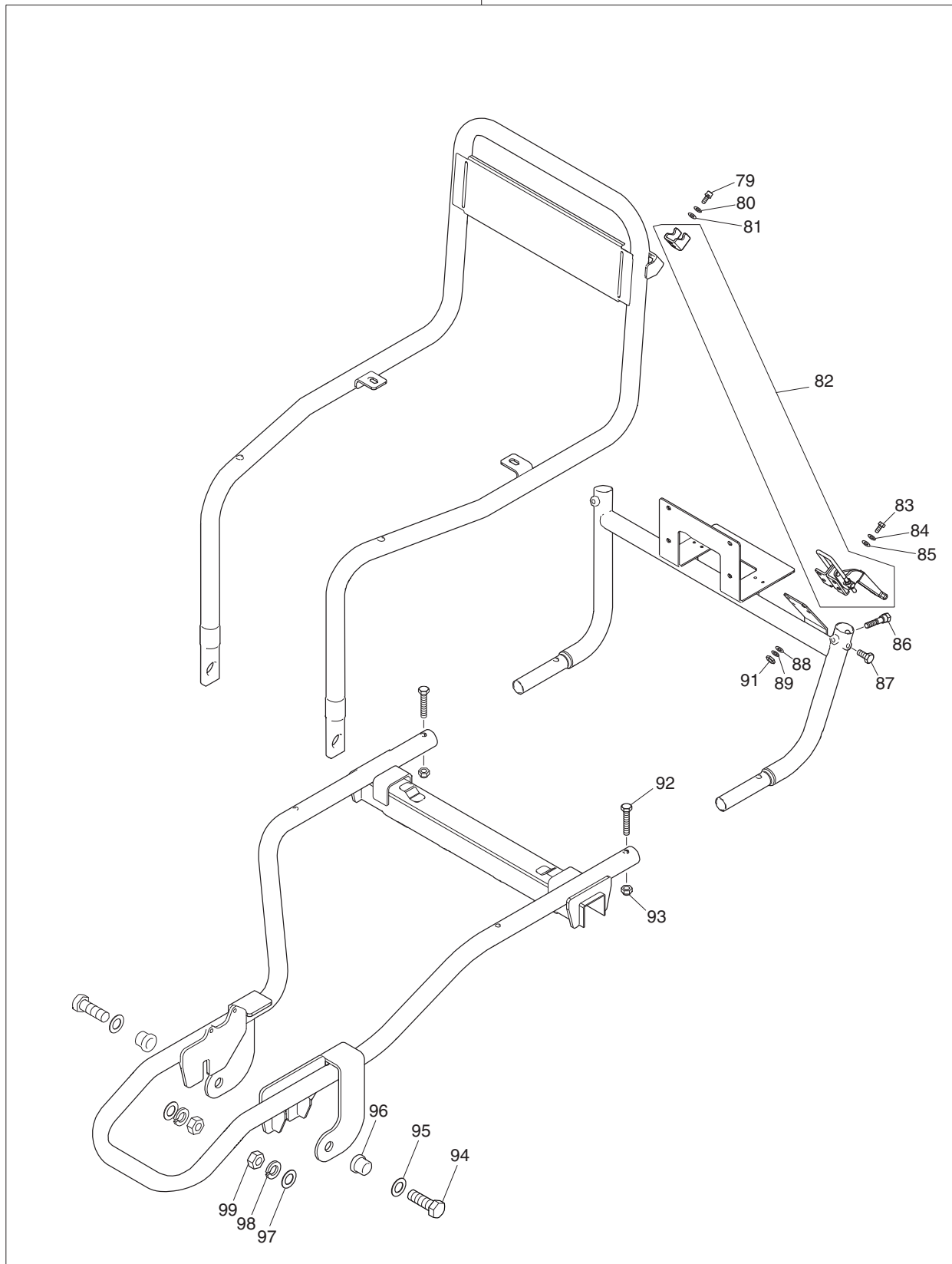


15



Item No.	Type	Sub	Part No.	Description	Qty	Unit
001			161640-0	HANDLE COMPLETE	2	PC.
002			161648-4	BRAKE ASSEMBLY	1	PC.
				Item No. 90		
003			266130-9	TAPPING SCREW BIND PT 3X16	5	PC.
004			183G32-5	SWITCH BOX SET	1	PC.
005			457633-6	SWITCH LEVER	1	PC.
006	2		265A97-4	H.S.H.BOLT M5X16 WITH WR	2	PC.
007			346249-1	PIPE CLAMP 28	2	PC.
008			233540-5	TORSION SPRING 11	1	PC.
009			144521-3	SWITCH PLATE COMPLETE	1	PC.
			812S78-3	SWITCH LABEL	1	PC.
011			650781-2	SWITCH C3JW-6B-P	1	PC.
012			251595-8	HEX.BOLT M8X20	2	PC.
013			687410-4	BAND	2	PC.
014			942201-3	SPRING WASHER 8	2	PC.
015	2		126905-7	* FRAME ASSEMBLY	1	PC.
				* Item No. 79-85, 88, 89, 91,,94-99		
016			253852-0	FLAT WASHER 8	2	PC.
017			699095-4	POWER SUPPLY CORD UNIT	1	PC.
018			812S79-1	MAKITA LOGO LABEL	1	PC.
019			126893-8	REAR TIRE R ASSEMBLY	1	PC.
			161639-5	JOINT	1	PC.
			161868-0	TIRE 260 WITH STOPPER	1	PC.
			921467-8	HEX. BOLT M8X45	1	PC.
			252105-4	HEX. LOCK NUT M8-13	1	PC.
020			347278-7	GUARD R	1	PC.
021			422151-3	PACKING	1	PC.
024			126837-8	REAR TIRE L ASSEMBLY	1	PC.
			161663-8	JOINT L	1	PC.
			161868-0	TIRE 260 WITH STOPPER	1	PC.
			921467-8	HEX. BOLT M8X45	1	PC.
			252105-4	HEX. LOCK NUT M8-13	1	PC.
025	2		265A97-4	H.S.H.BOLT M5X16 WITH WR	8	PC.
026			347238-9	CLAMP A	2	PC.
027			347239-7	CLAMP B	2	PC.
028			347394-5	* PLATE - No longer used	2	PC.
029			687849-1	BAND	5	PC.
030			319594-7	LIGHT CASE	2	PC.
031			213656-2	O RING 53	2	PC.
032			457636-0	REFLECTOR	2	PC.
033			457634-4	LENS	2	PC.
034			213604-1	O RING 50	2	PC.
035			457635-2	COVER	2	PC.
036			422166-0	PACKING	1	PC.
037			620685-2	LED CIRCUIT	2	PC.
038			687123-7	STRAIN RELIEF	3	PC.
039			266034-5	TAPPING SCREW CT 4X16	6	PC.
040			319595-5	LIGHT CASE COVER	2	PC.
041			266034-5	TAPPING SCREW CT 4X16	8	PC.
042			347279-5	GUARD L	1	PC.
043	1		922328-5	H.S.H.BOLT M6X18 WITH WR	2	PC.
	2		265A98-2	H.S.H.BOLT M6X18 WITH WR	2	PC.
044			161641-8	BRAKE CALIPER ASSEMBLY	1	PC.
045			347208-8	BRAKE DISC	1	PC.
046			161638-7	SNAP IN VALVE	1	PC.
047	1		126590-6	* WHEEL	1	PC.
			BF00000002	* HEX. NUT M16	2	PC.
			BF00000003	* FLAT WASHER	2	PC.
			BF00000001	* HEX. SOCKET BUTTON BOLT M5X8	6	PC.
	2		126904-9	* WHEEL	1	PC.
			BF00000002	* HEX. NUT M16	2	PC.

Item No.	Type	Sub	Part No.	Description	Qty	Unit
			BF00000003	* FLAT WASHER	2	PC.
			BF00000001	* HEX. SOCKET BUTTON BOLT M5X8	6	PC.
048	2		127081-0	* FRONT TIRE ASSEMBLY	1	PC.
				* Item No. 46,47,52		
050	2		232605-0	CONED DISC SPRING 16	2	PC.
051	2		253470-4	FLAT WASHER 17	2	PC.
052			422159-7	FRONT TIRE 430	1	PC.
053			457625-5	LEVER 25	1	PC.
054			213005-3	O RING 5	1	PC.
055			213078-6	O-RING 10	1	PC.
056			816M70-5	INDICATION LABEL	1	PC.
057			816M10-3	CAUTION LABEL	1	PC.
058			632K49-4	LEAD UNIT	1	PC.
059			699096-2	POWER SUPPLY CORD UNIT	1	PC.
			682576-5	GROMMET	1	PC.
			688162-0	LINE FILTER	2	PC.
060			853S84-9	NAME PLATE F/DCU180	1	PC.
061			266130-9	TAPPING SCREW BIND PT 3X16	2	PC.
062			457629-7	TERMINAL HOLDER	1	PC.
063			232267-4	LEAF SPRING	2	PC.
064			620675-5	CONTROLLER	1	PC.
065			135934-9	BATTERY BOX ASSY	1	PC.
				Item No. 53-55		
066			643874-2	TERMINAL	2	PC.
067			144519-0	CENTER CASE COMPLETE	1	PC.
			263005-3	RUBBER PIN 6	4	PC.
068			266130-9	TAPPING SCREW BIND PT 3X16	5	PC.
069			632K50-9	LEAD UNIT	1	PC.
070			144520-5	SUB CONTROLLER COMPLETE	1	PC.
071			620684-4	BUZZER CIRCUIT	1	PC.
072			457630-2	COVER	1	PC.
073			651534-2	SWITCH 1934.3112B	1	PC.
074			687123-7	STRAIN RELIEF	3	PC.
075			266326-2	TAPPING SCREW 4X18	6	PC.
076			457628-9	FRONT COVER	1	PC.
077			266130-9	TAPPING SCREW BIND PT 3X16	8	PC.
078	2		265A96-6	H.S.H.BOLT M5X14 WITH WR	4	PC.
079			TR00000069	HEX.SOCKET HEAD BOLT M5X14	2	PC.
080			942101-7	SPRING WASHER 5	2	PC.
081			941101-4	FLAT WASHER 5	2	PC.
082			TR00000067	LOCK LEVER	1	PC.
083			TR00000068	HEX.BOLT M5X16	4	PC.
084			942101-7	SPRING WASHER 5	4	PC.
085			941101-4	FLAT WASHER 5	4	PC.
086			251594-0	SHOULDER HEX. BOLT M8X40	2	PC.
087			251595-8	HEX.BOLT M8X20	2	PC.
088			941101-4	FLAT WASHER 5	4	PC.
089			942101-7	SPRING WASHER 5	4	PC.
090			144700-3	BRAKE CABLE	1	PC.
091			931202-6	HEX. NUT M5	4	PC.
092			921467-8	HEX. BOLT M8X45	2	PC.
093			252105-4	HEX. LOCK NUT M8-13	2	PC.
094			TR00000070	HEX.BOLT M16X50	2	PC.
095			TR00000073	FLAT WASHER 17	2	PC.
096			326968-5	SLEEVE 17	2	PC.
097			TR00000073	FLAT WASHER 17	2	PC.
098			TR00000072	SPRING 16	2	PC.
099			TR00000071	HEX.NUT M16-24	2	PC.
100	2		941102-2	* FLAT WASHER 5	6	PC.
101	2		253377-4	* FLAT WASHER 17	1	PC.
C01			820N64-0	CARTON	1	PC.
D01			654510-5	INSULATED CONNECTOR 5.5-SD	6	PC.

Item No.	Type	Sub	Part No.	Description	Qty	Unit
<u>ACCESSORIES</u>			- Visit www.makita.ca for more accessories information -			
A01			144675-6	SUPPORT FOOT	2	PC.
A02			455588-9	WIRE CLAMP	2	PC.
A03			643890-4	KEY	1	PC.
A04			781006-4	WRENCH 13	2	PC.
A05			198494-2	BUCKET TRAY (Parts breakdown available)	1	PC.
A06			199116-7	FLATBED TRAY (Parts breakdown available)	1	PC.

SERVICE CHANGES

1. Change of Frame assembly and Front tire assembly.

(T/I#C2897)

Item No.	Description	Type 1	Type 2	Image
15	Frame Assy	126589-1	126905-7	[1]
22	HSH Bolt M10x25	266240-2	---	
28	Plate	347394-5	---	
23	Flat Washer 10	941251-5	---	
48	Front tire assy	126734-8	127081-0	[2]
47	Wheel	126590-6	126904-9	
100	Flat Washer 5	---	941102-2	[3]
101	Flat Washer 17	---	253377-4	[4]

Type 2 implementation from Serial# 16814~

*Item No. 47 is a component of Item No. 48 Front tire assy